

SmartClip™ SL3 Self-Ligating Appliance System .....	1.2
SmartClip SL3 System Selection by Tooth – Maxillary .....	1.3
SmartClip SL3 System Selection by Tooth – Mandibular .....	1.4
SmartClip SL3 System Variable Prescription Orthodontics (VPO).....	1.5
SmartClip™ SL3 MBT™ Versatile+ Appliance System .....	1.7
SmartClip SL3 System Roth Prescription .....	1.8
SmartClip SL3 System Ricketts Prescription.....	1.9
SmartClip SL3 System One Case Kits.....	1.10
Clarity™ SL Self-Ligating Appliance System .....	1.11
Clarity SL System Selection by Tooth – Maxillary and Mandibular.....	1.12
Clarity SL System Variable Prescription Orthodontics (VPO).....	1.13
Clarity™ SL MBT™ Versatile+ Appliance System .....	1.14
Clarity™ SL Brackets Roth Prescription.....	1.15
Clarity SL Brackets Ricketts Prescription.....	1.16
Clarity SL Brackets One Case Kits.....	1.17
Self-Ligating Bracket Hand Instruments.....	1.18
Archwires Introduction .....	1.19
Tandem Archwire Technique.....	1.20
Unitek™ Nitinol Heat-Activated Archwire .....	1.21
Unitek™ Nitinol Super-Elastic Archwire .....	1.22
Unitek™ Nitinol Classic Archwire.....	1.23
Unitek™ Beta III Titanium Archwire .....	1.24
Permachrome Resilient Archwire.....	1.25
Multi-Strand Archwire and Archwire Accessories.....	1.26
Practice Marketing Materials Resource Center .....	1.27
SmartClip™ SL3 Self-Ligating Appliance System Practice Enhancement Materials.....	1.28
Clarity™ SL Self-Ligating Appliance System Practice Enhancement Materials.....	1.30

# Self-Ligating Appliances

## SmartClip™ SL3 Self-Ligating Appliance System



**SMARTCLIP<sup>SL3</sup>**  
SELF-LIGATING APPLIANCE SYSTEM

### FAMILIAR BRACKET

Twin shape bracket with rhomboidal design  
Color-coded quadrant ID system

### DESIGN

Smooth radius surface for enhanced patient comfort  
Notched tie-wings for additional bicuspid identification  
Low profile self-ligating bracket  
Torque-in-base for level slot line up and improved finishing

### INTELLIGENT SL3 CLIP

Enhanced for easy wire engagement and disengagement  
Pre-programmed "release" of the archwire  
Open, clean design for improved patient hygiene  
Precisely finished nickel - titanium

### BONDING

Optional APC™ Adhesive Coated Appliance System  
Micro-etched 3-point contact base surface for anatomical contouring

### ALIGNMENT

Vertical scribe line for more accurate bracket placement



Available molar brackets for a complete 6 x 6 system

The SmartClip™ Self-Ligating Appliance System revolutionizes self-ligation. An integral nickel-titanium clip permits easy and simple archwire insertion and removal, yet holds the archwire with a pre-programmed force that avoids unintentional disengagement. The SmartClip™ Bracket also features a familiar twin-bracket design and is available in the MBT™ Versatile+ Appliance System. Choose either the APC™ II Adhesive Coated Appliance System or the APC™ Adhesive Coated Appliance PLUS System with color change adhesive for greater efficiency. These features, exclusively together in the SmartClip Appliance System, combine to bring unmatched efficiencies and more predictable outcomes to orthodontic treatment.

## APC™ II

Available in APC™ II  
Adhesive Coated  
Appliance System

## MBT™

Versatile+ Appliance System

## APC™ PLUS

Available in APC™ PLUS  
Adhesive Coated  
Appliance System

# Self-Ligating Appliances

## SmartClip™ SL3 Self-Ligating Appliance System



### Selection By Tooth – Maxillary

Maxillary	Torque	Ang	In/Out in. mm	Distal Offset	L/R	APC™ II Adhesive Coated Appliance System				APC™ PLUS Adhesive Coated Appliance System				
						.018 in.		.022 in.		.018 in.		.022 in.		
Central	22°	4°	.039 1.00		L	3	004-401	3	004-501	5	004-401	5	004-501	
	22°	4°	.039 1.00		R	3	004-402	3	004-502	5	004-402	5	004-502	
	22°	5°	.039 1.00		L	3	004-403	3	004-503	5	004-403	5	004-503	
	22°	5°	.039 1.00		R	3	004-404	3	004-504	5	004-404	5	004-504	
	17°	4°	.039 1.00		L	3	004-201	3	004-301	5	004-201	5	004-301	
	17°	4°	.039 1.00		R	3	004-202	3	004-302	5	004-202	5	004-302	
	12°	3°	.039 1.00		L	3	004-405	3	004-505	5	004-405	5	004-505	
	12°	3°	.039 1.00		R	3	004-406	3	004-506	5	004-406	5	004-506	
Lateral	15°	9°	.055 1.40		L	3	004-407	3	004-507	5	004-407	5	004-507	
	15°	9°	.055 1.40		R	3	004-408	3	004-508	5	004-408	5	004-508	
	10°	8°	.055 1.40		L	3	004-203	3	004-303	5	004-203	5	004-303	
	10°	8°	.055 1.40		R	3	004-204	3	004-304	5	004-204	5	004-304	
	5°	8°	.055 1.40		L	3	004-409	3	004-509	5	004-409	5	004-509	
	5°	8°	.055 1.40		R	3	004-410	3	004-510	5	004-410	5	004-510	
Cuspid	6°	8°	.030 0.76		L	3	004-411	3	004-511	5	004-411	5	004-511	
	6°	8°	.030 0.76		R	3	004-412	3	004-512	5	004-412	5	004-512	
	3°	8°	.030 0.76		L	3	004-415	3	004-515	5	004-415	5	004-515	
	3°	8°	.030 0.76		R	3	004-416	3	004-516	5	004-416	5	004-516	
	0°	8°	.030 0.76		L	3	004-211	3	004-311	5	004-211	5	004-311	
	0°	8°	.030 0.76		R	3	004-212	3	004-312	5	004-212	5	004-312	
	-7°	8°	.030 0.76		L	3	004-207	3	004-307	5	004-207	5	004-307	
	-7°	8°	.030 0.76		R	3	004-208	3	004-308	5	004-208	5	004-308	
Cuspid Hook	6°	8°	.030 0.76		L	3	004-413	3	004-513	5	004-413	5	004-513	
	6°	8°	.030 0.76		R	3	004-414	3	004-514	5	004-414	5	004-514	
	3°	8°	.030 0.76		L	3	004-417	3	004-517	5	004-417	5	004-517	
	3°	8°	.030 0.76		R	3	004-418	3	004-518	5	004-418	5	004-518	
	0°	8°	.030 0.76		L	3	004-213	3	004-313	5	004-213	5	004-313	
	0°	8°	.030 0.76		R	3	004-214	3	004-314	5	004-214	5	004-314	
	-7°	8°	.030 0.76		L	3	004-209	3	004-309	5	004-209	5	004-309	
	-7°	8°	.030 0.76		R	3	004-210	3	004-310	5	004-210	5	004-310	
Bicuspid Universal	-4°	0°	.036 0.91		L/R	3	004-425	0	3 004-525	0	5 004-425	0	5 004-525	0
	-7°	0°	.036 0.91		L/R	3	004-215	0	3 004-315	0	5 004-215	0	5 004-315	0
	-9°	0°	.036 0.91		L/R	3	004-419	0	3 004-519	0	5 004-419	0	5 004-519	0
Bicuspid with Hook	-4°	0°	.036 0.91		L	3	004-427	0	3 004-527	0	5 004-427	0	5 004-527	0
	-4°	0°	.036 0.91		R	3	004-429	0	3 004-529	0	5 004-429	0	5 004-529	0
	-7°	0°	.036 0.91		L	3	004-217	0	3 004-317	0	5 004-217	0	5 004-317	0
	-7°	0°	.036 0.91		R	3	004-218	0	3 004-318	0	5 004-218	0	5 004-318	0
	-9°	0°	.036 0.91		L	3	004-421	0	3 004-521	0	5 004-421	0	5 004-521	0
	-9°	0°	.036 0.91		R	3	004-423	0	3 004-523	0	5 004-423	0	5 004-523	0
1st Molar with Tie-wings	-14°	0°		10°	L	3	004-6011		3 004-7011	0	5 004-6011		5 004-7011	
	-14°	0°		10°	R	3	004-6022		3 004-7022	0	5 004-6022		5 004-7022	

**3** Use this prefix to order APC™ II Adhesive Coated Appliance System.

**5** Use this prefix to order APC™ PLUS Adhesive Coated Appliance System with color change adhesive.



**SMARTCLIP<sup>SL3</sup>**  
SELF-LIGATING APPLIANCE SYSTEM

**Note**  
APC™ System brackets sold in units of five. APC™ System molar appliances sold in units of four.

# Self-Ligating Appliances

## SmartClip™ SL3 Self-Ligating Appliance System

### Selection By Tooth – Mandibular

Mandibular	Torque	Ang	In/Out in. mm	Distal Offset	L/R	APC™ II Adhesive Coated Appliance System				APC™ PLUS Adhesive Coated Appliance System				
						.018 in.		.022 in.		.018 in.		.022 in.		
Anterior	3°	0°	.059 1.50		L/R	3	004-432	3	004-532	5	004-432	5	004-532	
	-1°	0°	.059 1.50		L/R	3	004-431	3	004-531	5	004-431	5	004-531	
	-6°	0°	.059 1.50		L/R	3	004-229	3	004-329	5	004-229	5	004-329	
Cuspid	7°	3°	.030 0.76		L	3	004-433	3	004-533	5	004-433	5	004-533	
	7°	3°	.030 0.76		R	3	004-434	3	004-534	5	004-434	5	004-534	
	0°	3°	.030 0.76		L	3	004-235	3	004-335	5	004-235	5	004-335	
	0°	3°	.030 0.76		R	3	004-236	3	004-336	5	004-236	5	004-336	
	-3°	3°	.030 0.76		L	3	004-437	3	004-537	5	004-437	5	004-537	
	-3°	3°	.030 0.76		R	3	004-438	3	004-538	5	004-438	5	004-538	
	-6°	3°	.030 0.76		L	3	004-231	3	004-331	5	004-231	5	004-331	
	-6°	3°	.030 0.76		R	3	004-232	3	004-332	5	004-232	5	004-332	
Cuspid Hook	7°	3°	.030 0.76		L	3	004-435	3	004-535	5	004-435	5	004-535	
	7°	3°	.030 0.76		R	3	004-436	3	004-536	5	004-436	5	004-536	
	0°	3°	.030 0.76		L	3	004-237	3	004-337	5	004-237	5	004-337	
	0°	3°	.030 0.76		R	3	004-238	3	004-338	5	004-238	5	004-338	
	-3°	3°	.030 0.76		L	3	004-439	3	004-539	5	004-439	5	004-539	
	-3°	3°	.030 0.76		R	3	004-440	3	004-540	5	004-440	5	004-540	
	-6°	3°	.030 0.76		L	3	004-233	3	004-333	5	004-233	5	004-333	
	-6°	3°	.030 0.76		R	3	004-234	3	004-334	5	004-234	5	004-334	
1st Bicuspid	-12°	2°	.035 0.89		L	3	004-239	0	3 004-339	0	5 004-239	0	5 004-339	0
	-12°	2°	.035 0.89		R	3	004-240	0	3 004-340	0	5 004-240	0	5 004-340	0
1st Bicuspid Hook	-12°	2°	.035 0.89		L	3	004-241	0	3 004-341	0	5 004-241	0	5 004-341	0
	-12°	2°	.035 0.89		R	3	004-242	0	3 004-342	0	5 004-242	0	5 004-342	0
2nd Bicuspid	-17°	2°	.035 0.89		L	3	004-247	0	3 004-347	0	5 004-247	0	5 004-347	0
	-17°	2°	.035 0.89		R	3	004-248	0	3 004-348	0	5 004-248	0	5 004-348	0
2nd Bicuspid Hook	-17°	2°	.035 0.89		L	3	004-249	0	3 004-349	0	5 004-249	0	5 004-349	0
	-17°	2°	.035 0.89		R	3	004-250	0	3 004-350	0	5 004-250	0	5 004-350	0
1st Molar	-20°	0°		0°	L	3	004-6033		3 004-7033		5 004-6033		5 004-7033	
with Tie-wings	-20°	0°		0°	R	3	004-6044		3 004-7044		5 004-6044		5 004-7044	

Offset

Offset

Offset

Offset

**3** Use this prefix to order APC™ II Adhesive Coated Appliance System.

**5** Use this prefix to order APC™ PLUS Adhesive Coated Appliance System with color change adhesive.



**SMARTCLIP SL3**  
SELF-LIGATING APPLIANCE SYSTEM

#### Note

APC™ System brackets sold in units of five. APC™ System molar appliances sold in units of four.

# Self-Ligating Appliances

## SmartClip™ SL3 Self-Ligating Appliance System



### Selection By Variable Prescription Orthodontics (VPO)

Maxillary	Torque	Ang	In/Out in. mm	Distal Offset	VPO	L/R	APC™ II Adhesive Coated Appliance System				APC™ PLUS Adhesive Coated Appliance System							
							.018 in.		.022 in.		.018 in.		.022 in.					
Central	22°	5°	.039	1.00	HIGH	L	3	004-403	3	004-503	5	004-403	5	004-503				
	22°	5°	.039	1.00	HIGH	R	3	004-404	3	004-504	5	004-404	5	004-504				
	17°	4°	.039	1.00	MED	L	3	004-201	3	004-301	5	004-201	5	004-301				
	17°	4°	.039	1.00	MED	R	3	004-202	3	004-302	5	004-202	5	004-302				
	12°	3°	.039	1.00	LOW	L	3	004-405	3	004-505	5	004-405	5	004-505				
	12°	3°	.039	1.00	LOW	R	3	004-406	3	004-506	5	004-406	5	004-506				
Lateral	15°	9°	.055	1.40	HIGH	L	3	004-407	3	004-507	5	004-407	5	004-507				
	15°	9°	.055	1.40	HIGH	R	3	004-408	3	004-508	5	004-408	5	004-508				
	10°	8°	.055	1.40	MED	L	3	004-203	3	004-303	5	004-203	5	004-303				
	10°	8°	.055	1.40	MED	R	3	004-204	3	004-304	5	004-204	5	004-304				
	5°	8°	.055	1.40	LOW	L	3	004-409	3	004-509	5	004-409	5	004-509				
	5°	8°	.055	1.40	LOW	R	3	004-410	3	004-510	5	004-410	5	004-510				
Cuspid	6°	8°	.030	0.76	HIGH	L	3	004-411	3	004-511	5	004-411	5	004-511				
	6°	8°	.030	0.76	HIGH	R	3	004-412	3	004-512	5	004-412	5	004-512				
	3°	8°	.030	0.76	MED	L	3	004-415	3	004-515	5	004-415	5	004-515				
	3°	8°	.030	0.76	MED	R	3	004-416	3	004-516	5	004-416	5	004-516				
	0°	8°	.030	0.76	LOW	L	3	004-211	3	004-311	5	004-211	5	004-311				
	0°	8°	.030	0.76	LOW	R	3	004-212	3	004-312	5	004-212	5	004-312				
Cuspid Hook	6°	8°	.030	0.76	HIGH	L	3	004-413	3	004-513	5	004-413	5	004-513				
	6°	8°	.030	0.76	HIGH	R	3	004-414	3	004-514	5	004-414	5	004-514				
	3°	8°	.030	0.76	MED	L	3	004-417	3	004-517	5	004-417	5	004-517				
	3°	8°	.030	0.76	MED	R	3	004-418	3	004-518	5	004-418	5	004-518				
	0°	8°	.030	0.76	LOW	L	3	004-213	3	004-313	5	004-213	5	004-313				
	0°	8°	.030	0.76	LOW	R	3	004-214	3	004-314	5	004-214	5	004-314				
Bicuspid Universal	-4°	0°	.036	0.91	HIGH	L/R	3	004-425	0	3	004-525	0	5	004-425	0	5	004-525	0
	-7°	0°	.036	0.91	MED	L/R	3	004-215	0	3	004-315	0	5	004-215	0	5	004-315	0
	-9°	0°	.036	0.91	LOW	L/R	3	004-419	0	3	004-519	0	5	004-419	0	5	004-519	0
Bicuspid with Hook	-4°	0°	.036	0.91	HIGH	L	3	004-427	0	3	004-527	0	5	004-427	0	5	004-527	0
	-4°	0°	.036	0.91	HIGH	R	3	004-429	0	3	004-529	0	5	004-429	0	5	004-529	0
	-7°	0°	.036	0.91	MED	L	3	004-217	0	3	004-317	0	5	004-217	0	5	004-317	0
	-7°	0°	.036	0.91	MED	R	3	004-218	0	3	004-318	0	5	004-218	0	5	004-318	0
	-9°	0°	.036	0.91	LOW	L	3	004-421	0	3	004-521	0	5	004-421	0	5	004-521	0
	-9°	0°	.036	0.91	LOW	R	3	004-423	0	3	004-523	0	5	004-423	0	5	004-523	0
1st Molar with Tie-wings	-14°	0°		10°	ALL	L	3	004-6011		3	004-7011		5	004-6011		5	004-7011	
	-14°	0°		10°	ALL	R	3	004-6022		3	004-7022		5	004-6022		5	004-7022	

**3** Use this prefix to order APC™ II Adhesive Coated Appliance System.

**5** Use this prefix to order APC™ PLUS Adhesive Coated Appliance System with color change adhesive.



**SMARTCLIP<sup>SL3</sup>**  
SELF-LIGATING APPLIANCE SYSTEM

**Note**  
APC™ System brackets sold in units of five. APC™ System molar appliances sold in units of four.

# Self-Ligating Appliances

## SmartClip™ SL3 Self-Ligating Appliance System

### Selection By Variable Prescription Orthodontics (VPO)

Mandibular	Torque	Ang	In/Out in. mm	Distal Offset	VPO	L/R	APC™ II Adhesive Coated Appliance System				APC™ PLUS Adhesive Coated Appliance System							
							.018 in.		.022 in.		.018 in.		.022 in.					
Anterior	3°	0°	.059 1.50		HIGH	L/R	3	004-432	3	004-532	5	004-432	5	004-532				
	-1°	0°	.059 1.50		MED	L/R	3	004-431	3	004-531	5	004-431	5	004-531				
	-6°	0°	.059 1.50		LO	L/R	3	004-229	3	004-329	5	004-229	5	004-329				
Cuspid	7°	3°	.030 0.76		HIGH	L	3	004-433	3	004-533	5	004-433	5	004-533				
	7°	3°	.030 0.76		HIGH	R	3	004-434	3	004-534	5	004-434	5	004-534				
	-3°	3°	.030 0.76		MED	L	3	004-437	3	004-537	5	004-437	5	004-537				
	-3°	3°	.030 0.76		MED	R	3	004-438	3	004-538	5	004-438	5	004-538				
	-6°	3°	.030 0.76		LO	L	3	004-231	3	004-331	5	004-231	5	004-331				
	-6°	3°	.030 0.76		LO	R	3	004-232	3	004-332	5	004-232	5	004-332				
Cuspid Hook	7°	3°	.030 0.76		HIGH	L	3	004-435	3	004-535	5	004-435	5	004-535				
	7°	3°	.030 0.76		HIGH	R	3	004-436	3	004-536	5	004-436	5	004-536				
	-3°	3°	.030 0.76		MED	L	3	004-439	3	004-539	5	004-439	5	004-539				
	-3°	3°	.030 0.76		MED	R	3	004-440	3	004-540	5	004-440	5	004-540				
	-6°	3°	.030 0.76		LO	L	3	004-233	3	004-333	5	004-233	5	004-333				
	-6°	3°	.030 0.76		LO	R	3	004-234	3	004-334	5	004-234	5	004-334				
1st Bicuspid	-12°	2°	.035 0.89		ALL	L	3	004-239	0	3	004-339	0	5	004-239	0	5	004-339	0
	-12°	2°	.035 0.89		ALL	R	3	004-240	0	3	004-340	0	5	004-240	0	5	004-340	0
1st Bicuspid Hook	-12°	2°	.035 0.89		ALL	L	3	004-241	0	3	004-341	0	5	004-241	0	5	004-341	0
	-12°	2°	.035 0.89		ALL	R	3	004-242	0	3	004-342	0	5	004-242	0	5	004-342	0
2nd Bicuspid	-17°	2°	.035 0.89		ALL	L	3	004-247	0	3	004-347	0	5	004-247	0	5	004-347	0
	-17°	2°	.035 0.89		ALL	R	3	004-248	0	3	004-348	0	5	004-248	0	5	004-348	0
2nd Bicuspid Hook	-17°	2°	.035 0.89		ALL	L	3	004-249	0	3	004-349	0	5	004-249	0	5	004-349	0
	-17°	2°	.035 0.89		ALL	R	3	004-250	0	3	004-350	0	5	004-250	0	5	004-350	0
1st Molar with Tie-wings	-20°	0°		0°	ALL	L	3	004-6033		3	004-7033		5	004-6033		5	004-7033	
	-20°	0°		0°	ALL	R	3	004-6044		3	004-7044		5	004-6044		5	004-7044	

Offset

**3** Use this prefix to order APC™ II Adhesive Coated Appliance System.

Offset

**5** Use this prefix to order APC™ PLUS Adhesive Coated Appliance System with color change adhesive.



**SMARTCLIP SL3**  
SELF-LIGATING APPLIANCE SYSTEM

#### Note

APC™ System brackets sold in units of five.

APC™ System molar appliances sold in units of four.

# Self-Ligating Appliances

## SmartClip™ SL3 Self-Ligating Appliance System

### Selection By MBT™ Versatile+ Appliance System

Maxillary	Torque	Ang	In/Out		Distal Offset	L/R	APC™ II Adhesive Coated Appliance System				APC™ PLUS Adhesive Coated Appliance System							
			in.	mm			.018 in.		.022 in.		.018 in.		.022 in.					
Central	22°	4°	.039	1.00		L	3	004-401		3	004-501		5	004-401		5	004-501	
	22°	4°	.039	1.00		R	3	004-402		3	004-502		5	004-402		5	004-502	
	17°	4°	.039	1.00		L	3	004-201		3	004-301		5	004-201		5	004-301	
	17°	4°	.039	1.00		R	3	004-202		3	004-302		5	004-202		5	004-302	
Lateral	10°	8°	.055	1.40		L	3	004-203		3	004-303		5	004-203		5	004-303	
	10°	8°	.055	1.40		R	3	004-204		3	004-304		5	004-204		5	004-304	
Cuspid	-7°	8°	.030	0.76		L	3	004-207		3	004-307		5	004-207		5	004-307	
	-7°	8°	.030	0.76		R	3	004-208		3	004-308		5	004-208		5	004-308	
	0°	8°	.030	0.76		L	3	004-211		3	004-311		5	004-211		5	004-311	
	0°	8°	.030	0.76		R	3	004-212		3	004-312		5	004-212		5	004-312	
Cuspid Hook	-7°	8°	.030	0.76		L	3	004-209		3	004-309		5	004-209		5	004-309	
	-7°	8°	.030	0.76		R	3	004-210		3	004-310		5	004-210		5	004-310	
	0°	8°	.030	0.76		L	3	004-213		3	004-313		5	004-213		5	004-313	
	0°	8°	.030	0.76		R	3	004-214		3	004-314		5	004-214		5	004-314	
Bicuspid Universal	-7°	0°	.036	0.91		L/R	3	004-215	0	3	004-315	0	5	004-215	0	5	004-315	0
Bicuspid with Hook	-7°	0°	.036	0.91		L	3	004-217	0	3	004-317	0	5	004-217	0	5	004-317	0
	-7°	0°	.036	0.91		R	3	004-218	0	3	004-318	0	5	004-218	0	5	004-318	0
1st Molar with Tie-wings	-14°	0°			10°	L	3	004-6011		3	004-7011		5	004-6011		5	004-7011	
	-14°	0°			10°	R	3	004-6022		3	004-7022		5	004-6022		5	004-7022	
<b>Mandibular</b>																		
Anterior	-6°	0°	.059	1.50		L/R	3	004-229		3	004-329		5	004-229		5	004-329	
Cuspid	-6°	3°	.030	0.76		L	3	004-231		3	004-331		5	004-231		5	004-331	
	-6°	3°	.030	0.76		R	3	004-232		3	004-332		5	004-232		5	004-332	
	0°	3°	.030	0.76		L	3	004-235		3	004-335		5	004-235		5	004-335	
	0°	3°	.030	0.76		R	3	004-236		3	004-336		5	004-236		5	004-336	
Cuspid Hook	-6°	3°	.030	0.76		L	3	004-233		3	004-333		5	004-233		5	004-333	
	-6°	3°	.030	0.76		R	3	004-234		3	004-334		5	004-234		5	004-334	
	0°	3°	.030	0.76		L	3	004-237		3	004-337		5	004-237		5	004-337	
	0°	3°	.030	0.76		R	3	004-238		3	004-338		5	004-238		5	004-338	
1st Bicuspid	-12°	2°	.035	0.89		L	3	004-239	0	3	004-339	0	5	004-239	0	5	004-339	0
	-12°	2°	.035	0.89		R	3	004-240	0	3	004-340	0	5	004-240	0	5	004-340	0
1st Bicuspid Hook	-12°	2°	.035	0.89		L	3	004-241	0	3	004-341	0	5	004-241	0	5	004-341	0
	-12°	2°	.035	0.89		R	3	004-242	0	3	004-342	0	5	004-242	0	5	004-342	0
2nd Bicuspid	-17°	2°	.035	0.89		L	3	004-247	0	3	004-347	0	5	004-247	0	5	004-347	0
	-17°	2°	.035	0.89		R	3	004-248	0	3	004-348	0	5	004-248	0	5	004-348	0
2nd Bicuspid Hook	-17°	2°	.035	0.89		L	3	004-249	0	3	004-349	0	5	004-249	0	5	004-349	0
	-17°	2°	.035	0.89		R	3	004-250	0	3	004-350	0	5	004-250	0	5	004-350	0
1st Molar with Tie-wings	-20°	0°			0°	L	3	004-6033		3	004-7033		5	004-6033		5	004-7033	
	-20°	0°			0°	R	3	004-6044		3	004-7044		5	004-6044		5	004-7044	

Offset

**3** Use this prefix to order APC™ II Adhesive Coated Appliance System.

**5** Use this prefix to order APC™ PLUS Adhesive Coated Appliance System with color change adhesive.



**SMARTCLIP SL3**  
SELF-LIGATING APPLIANCE SYSTEM

**Note**  
APC™ System brackets sold in units of five. APC™ System molar appliances sold in units of four.

# Self-Ligating Appliances

## SmartClip™ SL3 Self-Ligating Appliance System

### Selection By Roth\* Prescription

Maxillary	Torque	Ang	In/Out in. mm	Distal Offset	L/R	APC™ II Adhesive Coated Appliance System				APC™ PLUS Adhesive Coated Appliance System							
						.018 in.		.022 in.		.018 in.		.022 in.					
Central	12°	3°	.039 1.00		L	3	004-405	3	004-505	5	004-405	5	004-505				
	12°	3°	.039 1.00		R	3	004-406	3	004-506	5	004-406	5	004-506				
Lateral	5°	8°	.055 1.40		L	3	004-409	3	004-509	5	004-409	5	004-509				
	5°	8°	.055 1.40		R	3	004-410	3	004-510	5	004-410	5	004-510				
Cuspid	0°	8°	.030 0.76		L	3	004-211	3	004-311	5	004-211	5	004-311				
	0°	8°	.030 0.76		R	3	004-212	3	004-312	5	004-212	5	004-312				
Cuspid Hook	0°	8°	.030 0.76		L	3	004-213	3	004-313	5	004-213	5	004-313				
	0°	8°	.030 0.76		R	3	004-214	3	004-314	5	004-214	5	004-314				
Bicuspid Universal	-7°	0°	.036 0.91		L/R	3	004-215	0	3	004-315	0	5	004-215	0	5	004-315	0
Bicuspid with Hook	-7°	0°	.036 0.91		L	3	004-217	0	3	004-317	0	5	004-217	0	5	004-317	0
	-7°	0°	.036 0.91		R	3	004-218	0	3	004-318	0	5	004-218	0	5	004-318	0
1st Molar with Tie-wings	-14°	0°		10°	L	3	004-6011		3	004-7011		5	004-6011		5	004-7011	
	-14°	0°		10°	R	3	004-6022		3	004-7022		5	004-6022		5	004-7022	
<b>Mandibular</b>																	
Anterior	-1°	0°	.059 1.50		L/R	3	004-431		3	004-531		5	004-431		5	004-531	
Cuspid	-6°	3°	.030 0.76		L	3	004-231		3	004-331		5	004-231		5	004-331	
	-6°	3°	.030 0.76		R	3	004-232		3	004-332		5	004-232		5	004-332	
Cuspid Hook	-6°	3°	.030 0.76		L	3	004-233		3	004-333		5	004-233		5	004-333	
	-6°	3°	.030 0.76		R	3	004-234		3	004-334		5	004-234		5	004-334	
1st Bicuspid	-12°	2°	.035 0.89		L	3	004-239	0	3	004-339	0	5	004-239	0	5	004-339	0
	-12°	2°	.035 0.89		R	3	004-240	0	3	004-340	0	5	004-240	0	5	004-340	0
1st Bicuspid Hook	-12°	2°	.035 0.89		L	3	004-241	0	3	004-341	0	5	004-241	0	5	004-341	0
	-12°	2°	.035 0.89		R	3	004-242	0	3	004-342	0	5	004-242	0	5	004-342	0
2nd Bicuspid	-17°	2°	.035 0.89		L	3	004-247	0	3	004-347	0	5	004-247	0	5	004-347	0
	-17°	2°	.035 0.89		R	3	004-248	0	3	004-348	0	5	004-248	0	5	004-348	0
2nd Bicuspid Hook	-17°	2°	.035 0.89		L	3	004-249	0	3	004-349	0	5	004-249	0	5	004-349	0
	-17°	2°	.035 0.89		R	3	004-250	0	3	004-350	0	5	004-250	0	5	004-350	0
1st Molar with Tie-wings	-20°	0°		0°	L	3	004-6033		3	004-7033		5	004-6033		5	004-7033	
	-20°	0°		0°	R	3	004-6044		3	004-7044		5	004-6044		5	004-7044	

**3** Use this prefix to order APC™ II Adhesive Coated Appliance System.

**5** Use this prefix to order APC™ PLUS Adhesive Coated Appliance System with color change adhesive.



**SMARTCLIP SL3**  
SELF-LIGATING APPLIANCE SYSTEM

#### Note

APC™ System brackets sold in units of five.	APC™ System molar appliances sold in units of four.
Kits on this page are not available uncoated.	*3M Unitek version of this prescription. No endorsement by the doctor is implied.

# Self-Ligating Appliances

## SmartClip™ SL3 Self-Ligating Appliance System



### Selection By Ricketts\* Prescription

Maxillary	Torque	Ang	In/Out in. mm	Distal Offset	L/R	APC™ II Adhesive Coated Appliance System				APC™ PLUS Adhesive Coated Appliance System			
						.018 in.		.022 in.		.018 in.		.022 in.	
Central	22°	5°	.039 1.00		L	3	004-403	3	004-503	5	004-403	5	004-503
	22°	5°	.039 1.00		R	3	004-404	3	004-504	5	004-404	5	004-504
Lateral	15°	9°	.055 1.40		L	3	004-407	3	004-507	5	004-407	5	004-507
	15°	9°	.055 1.40		R	3	004-408	3	004-508	5	004-408	5	004-508
Cuspid	6°	8°	.030 0.76		L	3	004-411	3	004-511	5	004-411	5	004-511
	6°	8°	.030 0.76		R	3	004-412	3	004-512	5	004-412	5	004-512
Cuspid Hook	6°	8°	.030 0.76		L	3	004-413	3	004-513	5	004-413	5	004-513
	6°	8°	.030 0.76		R	3	004-414	3	004-514	5	004-414	5	004-514
Bicuspid Universal	-4°	0°	.036 0.91		L/R	3	004-425	3	004-525	5	004-425	5	004-525
Bicuspid with Hook	-4°	0°	.036 0.91		L	3	004-427	3	004-527	5	004-427	5	004-527
	-4°	0°	.036 0.91		R	3	004-429	3	004-529	5	004-429	5	004-529
1st Molar with Tie-wings	-14°	0°		10°	L	3	004-6011	3	004-7011	5	004-6011	5	004-7011
	-14°	0°		10°	R	3	004-6022	3	004-7022	5	004-6022	5	004-7022
<b>Mandibular</b>													
Anterior	-1°	0°	.059 1.50		L/R	3	004-431	3	004-531	5	004-431	5	004-531
Cuspid	7°	3°	.030 0.76		L	3	004-433	3	004-533	5	004-433	5	004-533
	7°	3°	.030 0.76		R	3	004-434	3	004-534	5	004-434	5	004-534
Cuspid Hook	7°	3°	.030 0.76		L	3	004-435	3	004-535	5	004-435	5	004-535
	7°	3°	.030 0.76		R	3	004-436	3	004-536	5	004-436	5	004-536
1st Bicuspid	-12°	2°	.035 0.89		L	3	004-239	0	3 004-339	0	5 004-239	0	5 004-339
	-12°	2°	.035 0.89		R	3	004-240	0	3 004-340	0	5 004-240	0	5 004-340
1st Bicuspid Hook	-12°	2°	.035 0.89		L	3	004-241	0	3 004-341	0	5 004-241	0	5 004-341
	-12°	2°	.035 0.89		R	3	004-242	0	3 004-342	0	5 004-242	0	5 004-342
2nd Bicuspid	-17°	2°	.035 0.89		L	3	004-247	0	3 004-347	0	5 004-247	0	5 004-347
	-17°	2°	.035 0.89		R	3	004-248	0	3 004-348	0	5 004-248	0	5 004-348
2nd Bicuspid Hook	-17°	2°	.035 0.89		L	3	004-249	0	3 004-349	0	5 004-249	0	5 004-349
	-17°	2°	.035 0.89		R	3	004-250	0	3 004-350	0	5 004-250	0	5 004-350
1st Molar with Tie-wings	-20°	0°		0°	L	3	004-6033	3	004-7033	5	004-6033	5	004-7033
	-20°	0°		0°	R	3	004-6044	3	004-7044	5	004-6044	5	004-7044

Offset

Offset

Offset

Offset

**3** Use this prefix to order APC™ II Adhesive Coated Appliance System.

**5** Use this prefix to order APC™ PLUS Adhesive Coated Appliance System with color change adhesive.



**SMARTCLIP|SL3**  
SELF-LIGATING APPLIANCE SYSTEM

Note	
APC™ System brackets sold in units of five.	APC™ System molar appliances sold in units of four.
Kits on this page are only available coated.	*3M Unitek version of this prescription. No endorsement by the doctor is implied.

# Self-Ligating Appliances

## SmartClip™ SL3 Self-Ligating Appliance System

### SmartClip SL3 Brackets One Case Kits

	APC™ II Adhesive Coated Appliance System		APC™ PLUS Adhesive Coated Appliance System	
	.018 in.	.022 in.	.018 in.	.022 in.
<b>MBT™ Versatile+ Appliance System One Case Kits – 6 x 6</b>				
U/L 6 x 6	3 004-106	3 004-126	5 004-106	5 004-126
U/L 6 x 6 Cuspid Hook	3 004-107	3 004-127	5 004-107	5 004-127
U/L 6 x 6 Hooks	3 004-108	3 004-128	5 004-108	5 004-128
U/L 6 x 6 0° Torque Cuspid	3 004-109	3 004-129	5 004-109	5 004-129
U/L 6 x 6 Cuspid Hook 0° Torque Cuspid	3 004-110	3 004-130	5 004-110	5 004-130
U/L 6 x 6 Cuspid Hook 0° Torque Cuspid Hook	3 004-111	3 004-131	5 004-111	5 004-131

**3** Use this prefix to order APC™ II Adhesive Coated Appliance System.

**5** Use this prefix to order APC™ PLUS Adhesive Coated Appliance System with color change adhesive.

	APC™ II Adhesive Coated Appliance System		APC™ PLUS Adhesive Coated Appliance System	
	.018 in.	.022 in.	.018 in.	.022 in.
<b>MBT™ Versatile+ Appliance System One Case Kits – 5 x 5</b>				
U/L 5 x 5	3 004-100	3 004-120	5 004-100	5 004-120
U/L 5 x 5 Cuspid Hook	3 004-101	3 004-121	5 004-101	5 004-121
U/L 5 x 5 Hooks	3 004-102	3 004-122	5 004-102	5 004-122
U/L 5 x 5 0° Torque Cuspid	3 004-103	3 004-123	5 004-103	5 004-123
U/L 5 x 5 Cuspid Hook 0° Torque Cuspid	3 004-104	3 004-124	5 004-104	5 004-124
U/L 5 x 5 Cuspid Hook 0° Torque	3 004-105	3 004-125	5 004-105	5 004-125

**3** Use this prefix to order APC™ II Adhesive Coated Appliance System.

**5** Use this prefix to order APC™ PLUS Adhesive Coated Appliance System with color change adhesive.

	APC™ II Adhesive Coated Appliance System		APC™ PLUS Adhesive Coated Appliance System	
	.018 in.	.022 in.	.018 in.	.022 in.
<b>Roth* Prescription One Case Kits</b>				
U/L 5 x 5	3 004-132	3 004-142	5 004-132	5 004-142
U/L 5 x 5 Cuspid Hook	3 004-133	3 004-143	5 004-133	5 004-143
U/L 5 x 5 Hooks	3 004-134	3 004-144	5 004-134	5 004-144

**3** Use this prefix to order APC™ II Adhesive Coated Appliance System.

**5** Use this prefix to order APC™ PLUS Adhesive Coated Appliance System with color change adhesive.

	APC™ II Adhesive Coated Appliance System		APC™ PLUS Adhesive Coated Appliance System	
	.018 in.	.022 in.	.018 in.	.022 in.
<b>Ricketts* Prescription One Case Kits</b>				
U/L 5 x 5	3 004-135	3 004-145	5 004-135	5 004-145
U/L 5 x 5 Cuspid Hook	3 004-136	3 004-146	5 004-136	5 004-146
U/L 5 x 5 Hooks	3 004-137	3 004-147	5 004-137	5 004-147

**3** Use this prefix to order APC™ II Adhesive Coated Appliance System.

**5** Use this prefix to order APC™ PLUS Adhesive Coated Appliance System with color change adhesive.



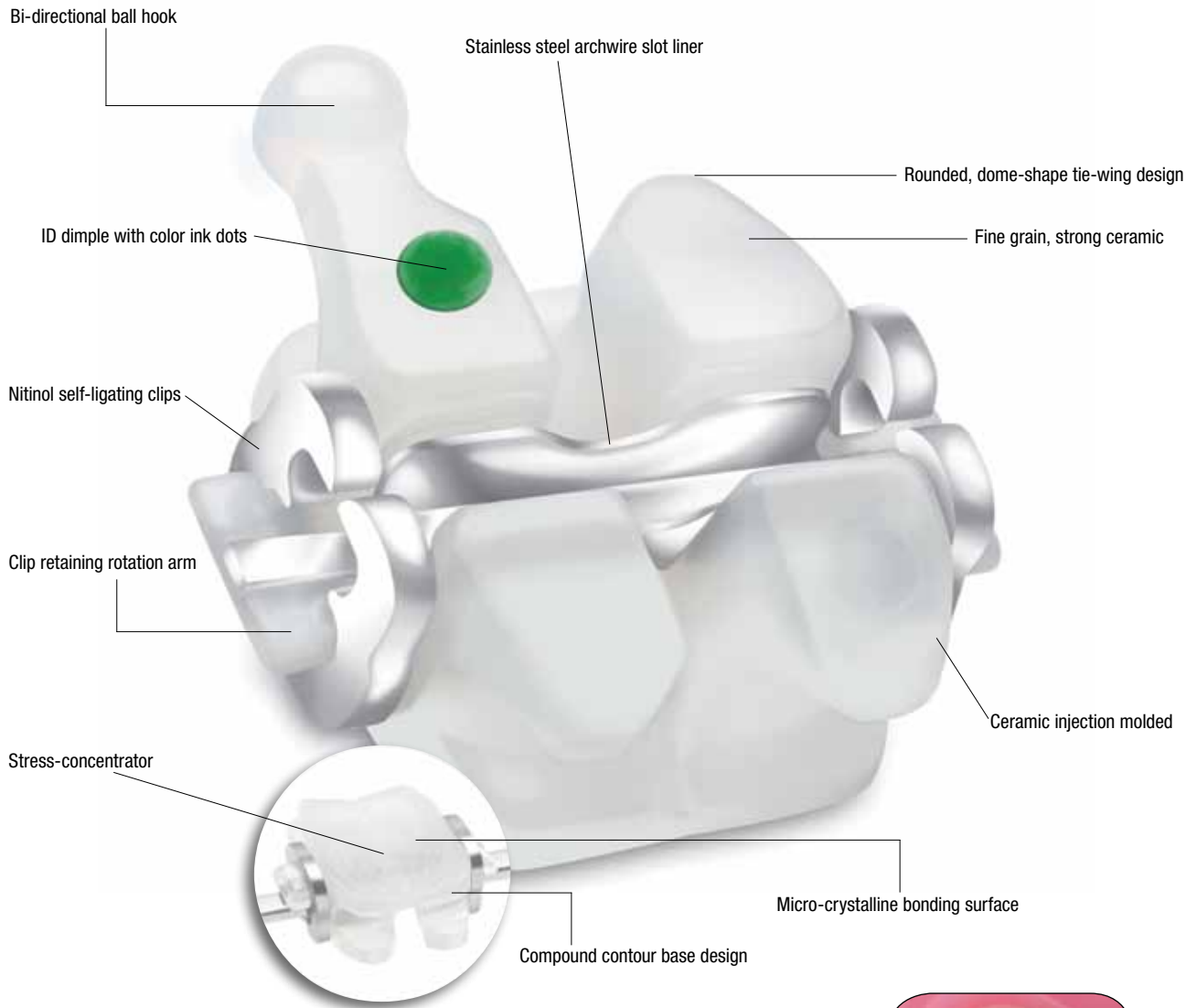
**SMARTCLIP SL3**  
SELF-LIGATING APPLIANCE SYSTEM

#### Note

APC™ System brackets sold in units of five.	APC™ System molar appliances sold in units of four.
Kits on this page are not available uncoated.	*3M Unitek version of this prescription. No endorsement by the doctor is implied.

# Self-Ligating Appliances

## Clarity™ SL Self-Ligating Appliance System



At every stage, from patient consultation on through to debonding, Clarity™ SL Self-Ligating Brackets are designed to empower you and your staff. Clarity SL brackets combine the benefits of passive self-ligation, true twin design and hallmark Clarity™ bracket aesthetics to efficiently deliver the results you and your patients expect.

Treatment starts with patient acceptance. That's why the Clarity SL Self-Ligating Appliance is designed to help you tap important patient interests such as aesthetic treatment and convenience without giving up what you want: an appliance that delivers results.



Clip retaining rotation arms enhance rotation control

### APC™ II

Available in APC™ II  
Adhesive Coated  
Appliance System

### MBT™

Versatile+ Appliance System

### APC™ PLUS

Available in APC™ PLUS  
Adhesive Coated  
Appliance System

# Self-Ligating Appliances

## Clarity™ SL Self-Ligating Appliance System

### Selection By Tooth

Maxillary	Torque	Ang	In/Out		L/R	APC™ II Adhesive Coated Appliance System		APC™ PLUS Adhesive Coated Appliance System					
			in.	mm		.018 in.	.022 in.	.018 in.	.022 in.				
Central	22°	5°	.044	1.12	L	3	007-543	3	007-443	5	007-543	5	007-443
	22°	5°	.044	1.12	R	3	007-544	3	007-444	5	007-544	5	007-444
	22°	4°	.044	1.12	L	3	007-545	3	007-445	5	007-545	5	007-445
	22°	4°	.044	1.12	R	3	007-546	3	007-446	5	007-546	5	007-446
	17°	4°	.044	1.12	L	3	007-501	3	007-401	5	007-501	5	007-401
	17°	4°	.044	1.12	R	3	007-502	3	007-402	5	007-502	5	007-402
	12°	5°	.044	1.12	L	3	007-517	3	007-417	5	007-517	5	007-417
	12°	5°	.044	1.12	R	3	007-518	3	007-418	5	007-518	5	007-418
Lateral	15°	9°	.058	1.47	L	3	007-547	3	007-447	5	007-547	5	007-447
	15°	9°	.058	1.47	R	3	007-548	3	007-448	5	007-548	5	007-448
	10°	8°	.058	1.47	L	3	007-503	3	007-403	5	007-503	5	007-403
	10°	8°	.058	1.47	R	3	007-504	3	007-404	5	007-504	5	007-404
	8°	9°	.058	1.47	L	3	007-519	3	007-419	5	007-519	5	007-419
	8°	9°	.058	1.47	R	3	007-520	3	007-420	5	007-520	5	007-420
Cuspid	0°	8°	.030	0.76	L	3	007-511	3	007-411	5	007-511	5	007-411
	0°	8°	.030	0.76	R	3	007-512	3	007-412	5	007-512	5	007-412
Cuspid Hook	6°	8°	.030	0.76	L	3	007-549	3	007-449	5	007-549	5	007-449
	6°	8°	.030	0.76	R	3	007-550	3	007-450	5	007-550	5	007-450
	0°	8°	.030	0.76	L	3	007-505	3	007-405	5	007-505	5	007-405
	0°	8°	.030	0.76	R	3	007-506	3	007-406	5	007-506	5	007-406
	-2°	9°	.030	0.76	L	3	007-521	3	007-421	5	007-521	5	007-421
	-2°	9°	.030	0.76	R	3	007-522	3	007-422	5	007-522	5	007-422
Bicuspid Universal	-7°	0°	.036	0.92	L/R	3	007-509	3	007-409	5	007-509	5	007-409
Bicuspid Hook	-4°	0°	.036	0.92	L	3	007-551	3	007-451	5	007-551	5	007-451
	-4°	0°	.036	0.92	R	3	007-552	3	007-452	5	007-552	5	007-452
	-7°	0°	.036	0.92	L	3	007-507	3	007-407	5	007-507	5	007-407
	-7°	0°	.036	0.92	R	3	007-508	3	007-408	5	007-508	5	007-408
<b>Mandibular</b>													
Anterior	-6°	0	.060	1.52		3	007-530	3	007-430	5	007-530	5	007-430
Cuspid Hook	0°	3	.029	0.74	L	3	007-531	3	007-431	5	007-531	5	007-431
	0°	3	.029	0.74	R	3	007-532	3	007-432	5	007-532	5	007-432
1st Bicuspid	-12°	2	.029	0.74	L	3	007-539	3	007-439	5	007-539	5	007-439
	-12°	2	.029	0.74	R	3	007-540	3	007-440	5	007-540	5	007-440
2nd Bicuspid	-17°	2	.033	0.84	L	3	007-541	3	007-441	5	007-541	5	007-441
	-17°	2	.033	0.84	R	3	007-542	3	007-442	5	007-542	5	007-442

**3** Use this prefix to order APC™ II Adhesive Coated Appliance System.

**5** Use this prefix to order APC™ PLUS Adhesive Coated Appliance System with color change adhesive.

**C L A R I T Y™ | S L**

SELF-LIGATING APPLIANCE SYSTEM

#### Note

APC™ System brackets sold in units of five. APC™ System molar appliances sold in units of four.

# Self-Ligating Appliances

## Clarity™ SL Self-Ligating Appliance System



### Selection By Variable Prescription Orthodontics (VPO)

Maxillary	Torque	Ang	In/Out		L/R	VPO	APC™ II Adhesive Coated Appliance System		APC™ PLUS Adhesive Coated Appliance System					
			in.	mm			.018 in.	.022 in.	.018 in.	.022 in.				
Central	22°	5°	.044	1.12	L	HIGH	3	007-543	3	007-443	5	007-543	5	007-443
	22°	5°	.044	1.12	R	HIGH	3	007-544	3	007-444	5	007-544	5	007-444
	17°	4°	.044	1.12	L	MED	3	007-501	3	007-401	5	007-501	5	007-401
	17°	4°	.044	1.12	R	MED	3	007-502	3	007-402	5	007-502	5	007-402
	12°	5°	.044	1.12	L	LOW	3	007-517	3	007-417	5	007-517	5	007-417
	12°	5°	.044	1.12	R	LOW	3	007-518	3	007-418	5	007-518	5	007-418
Lateral	15°	9°	.058	1.47	L	HIGH	3	007-547	3	007-447	5	007-547	5	007-447
	15°	9°	.058	1.47	R	HIGH	3	007-548	3	007-448	5	007-548	5	007-448
	10°	8°	.058	1.47	L	MED	3	007-503	3	007-403	5	007-503	5	007-403
	10°	8°	.058	1.47	R	MED	3	007-504	3	007-404	5	007-504	5	007-404
	8°	9°	.058	1.47	L	LOW	3	007-519	3	007-419	5	007-519	5	007-419
	8°	9°	.058	1.47	R	LOW	3	007-520	3	007-420	5	007-520	5	007-420
Cuspid	0°	8°	.030	0.76	L	LOW	3	007-511	3	007-411	5	007-511	5	007-411
	0°	8°	.030	0.76	R	LOW	3	007-512	3	007-412	5	007-512	5	007-412
Cuspid Hook	6°	8°	.030	0.76	L	HIGH	3	007-549	3	007-449	5	007-549	5	007-449
	6°	8°	.030	0.76	R	HIGH	3	007-550	3	007-450	5	007-550	5	007-450
	0°	8°	.030	0.76	L	LOW	3	007-505	3	007-405	5	007-505	5	007-405
	0°	8°	.030	0.76	R	LOW	3	007-506	3	007-406	5	007-506	5	007-406
Bicuspid Universal	-7°	0°	.036	0.92	L/R	MED	3	007-509	3	007-409	5	007-509	5	007-409
Bicuspid Hook	-4°	0°	.036	0.92	L	HIGH	3	007-551	3	007-451	5	007-551	5	007-451
	-4°	0°	.036	0.92	R	HIGH	3	007-552	3	007-452	5	007-552	5	007-452
	-7°	0°	.036	0.92	L	MED	3	007-507	3	007-407	5	007-507	5	007-407
	-7°	0°	.036	0.92	R	MED	3	007-508	3	007-408	5	007-508	5	007-408
<b>Mandibular</b>														
Anterior	-6°	0°	.060	1.52		MED	3	007-530	3	007-430	5	007-530	5	007-430
Cuspid Hook	0°	3°	.029	0.74	L	LOW	3	007-531	3	007-431	5	007-531	5	007-431
	0°	3°	.029	0.74	R	LOW	3	007-532	3	007-432	5	007-532	5	007-432
1st Bicuspid	-12°	2°	.029	0.74	L	ALL	3	007-539	3	007-439	5	007-539	5	007-439
	-12°	2°	.029	0.74	R	ALL	3	007-540	3	007-440	5	007-540	5	007-440
2nd Bicuspid	-17°	2°	.033	0.84	L	ALL	3	007-541	3	007-441	5	007-541	5	007-441
	-17°	2°	.033	0.84	R	ALL	3	007-542	3	007-442	5	007-542	5	007-442

**3** Use this prefix to order APC™ II Adhesive Coated Appliance System.

**5** Use this prefix to order APC™ PLUS Adhesive Coated Appliance System with color change adhesive.



**Note**  
 APC™ System brackets sold in units of five. APC™ System molar appliances sold in units of four.

# Self-Ligating Appliances

## Clarity™ SL Self-Ligating Appliance System

### Selection By MBT™ Versatile+ Appliance System

Maxillary	Torque	Ang	In/Out		L/R	APC™ II Adhesive Coated Appliance System		APC™ PLUS Adhesive Coated Appliance System					
			in.	mm		.018 in.	.022 in.	.018 in.	.022 in.				
Central	17°	4°	.044	1.12	L	3	007-501	3	007-401	5	007-501	5	007-401
	17°	4°	.044	1.12	R	3	007-502	3	007-402	5	007-502	5	007-402
	22°	4°	.044	1.12	L	3	007-545	3	007-445	5	007-545	5	007-445
	22°	4°	.044	1.12	R	3	007-546	3	007-446	5	007-546	5	007-446
Lateral	10°	8°	.058	1.47	L	3	007-503	3	007-403	5	007-503	5	007-403
	10°	8°	.058	1.47	R	3	007-504	3	007-404	5	007-504	5	007-404
Cuspid	0°	8°	.030	0.76	L	3	007-511	3	007-411	5	007-511	5	007-411
	0°	8°	.030	0.76	R	3	007-512	3	007-412	5	007-512	5	007-412
Cuspid Hook	0°	8°	.030	0.76	L	3	007-505	3	007-405	5	007-505	5	007-405
	0°	8°	.030	0.76	R	3	007-506	3	007-406	5	007-506	5	007-406
Bicuspid Universal	-7°	0°	.036	0.92	L/R	3	007-509	3	007-409	5	007-509	5	007-409
Bicuspid Hook	-7°	0°	.036	0.92	L	3	007-507	3	007-407	5	007-507	5	007-407
	-7°	0°	.036	0.92	R	3	007-508	3	007-408	5	007-508	5	007-408
<b>Mandibular</b>													
Anterior	-6°	0°	.060	1.52		3	007-530	3	007-430	5	007-530	5	007-430
Cuspid Hook	0°	3°	.029	0.74	L	3	007-531	3	007-431	5	007-531	5	007-431
	0°	3°	.029	0.74	R	3	007-532	3	007-432	5	007-532	5	007-432
1st Bicuspid	-12°	2°	.029	0.74	L	3	007-539	3	007-439	5	007-539	5	007-439
	-12°	2°	.029	0.74	R	3	007-540	3	007-440	5	007-540	5	007-440
2nd Bicuspid	-17°	2°	.033	0.84	L	3	007-541	3	007-441	5	007-541	5	007-441
	-17°	2°	.033	0.84	R	3	007-542	3	007-442	5	007-542	5	007-442

**3** Use this prefix to order APC™ II Adhesive Coated Appliance System.

**5** Use this prefix to order APC™ PLUS Adhesive Coated Appliance System with color change adhesive.

**C L A R I T Y™ | S L**

SELF-LIGATING APPLIANCE SYSTEM

**Note**

APC™ System brackets sold in units of five.

APC™ System molar appliances sold in units of four.

# Self-Ligating Appliances

## Clarity™ SL Self-Ligating Appliance System



### Selection By Roth\* Prescription

Maxillary	Torque	Ang	In/Out		L/R	APC™ II Adhesive Coated Appliance System		APC™ PLUS Adhesive Coated Appliance System					
			in.	mm		.018 in.	.022 in.	.018 in.	.022 in.				
Central	12°	5°	.044	1.12	L	3	007-517	3	007-417	5	007-517	5	007-417
	12°	5°	.044	1.12	R	3	007-518	3	007-418	5	007-518	5	007-418
Lateral	8°	9°	.058	1.47	L	3	007-519	3	007-419	5	007-519	5	007-419
	8°	9°	.058	1.47	R	3	007-520	3	007-420	5	007-520	5	007-420
Cuspid Hook	-2°	9°	.030	0.76	L	3	007-521	3	007-421	5	007-521	5	007-421
	-2°	9°	.030	0.76	R	3	007-522	3	007-422	5	007-522	5	007-422
Bicuspid Universal	-7°	0°	.036	0.92	L/R	3	007-509	3	007-409	5	007-509	5	007-409
Bicuspid Hook	-7°	0°	.036	0.92	L	3	007-523	3	007-423	5	007-523	5	007-423
	-7°	0°	.036	0.92	R	3	007-524	3	007-424	5	007-524	5	007-424

**3** Use this prefix to order APC™ II Adhesive Coated Appliance System.

**5** Use this prefix to order APC™ PLUS Adhesive Coated Appliance System with color change adhesive.

## CLARITY™ | SL

SELF-LIGATING APPLIANCE SYSTEM

**Note**

APC™ System brackets sold in units of five.	APC™ System molar appliances sold in units of four.
---	---

\* 3M Unitek version of this prescription. No endorsement by the Doctor is implied.

# Self-Ligating Appliances

## Clarity™ SL Self-Ligating Appliance System

### Selection By Ricketts\* Prescription

Maxillary	Torque	Ang	In/Out		L/R	APC™ II Adhesive Coated Appliance System		APC™ PLUS Adhesive Coated Appliance System					
			in.	mm		.018 in.	.022 in.	.018 in.	.022 in.				
Central	22°	5°	.044	1.12	L	3	007-543	3	007-443	5	007-543	5	007-443
	22°	5°	.044	1.12	R	3	007-544	3	007-444	5	007-544	5	007-444
	22°	4°	.044	1.12	L	3	007-545	3	007-445	5	007-545	5	007-445
	22°	4°	.044	1.12	R	3	007-546	3	007-446	5	007-546	5	007-446
Lateral	15°	9°	.058	1.47	L	3	007-547	3	007-447	5	007-547	5	007-447
	15°	9°	.058	1.47	R	3	007-548	3	007-448	5	007-548	5	007-448
Cuspid Hook	6°	8°	.030	0.76	L	3	007-549	3	007-449	5	007-549	5	007-449
	6°	8°	.030	0.76	R	3	007-550	3	007-450	5	007-550	5	007-450
Bicuspid Hook	-4°	0°	.036	0.92	L	3	007-551	3	007-451	5	007-551	5	007-451
	-4°	0°	.036	0.92	R	3	007-552	3	007-452	5	007-552	5	007-452

**3** Use this prefix to order APC™ II Adhesive Coated Appliance System.

**5** Use this prefix to order APC™ PLUS Adhesive Coated Appliance System with color change adhesive.

**C L A R I T Y™ | S L**

SELF-LIGATING APPLIANCE SYSTEM

#### Note

APC™ System brackets sold in units of five. APC™ System molar appliances sold in units of four.

\* 3M Unitek version of this prescription. No endorsement by the Doctor is implied.

# Self-Ligating Appliances

## Clarity™ SL Self-Ligating Appliance System

### Clarity™ SL Brackets One Case Kits

<b>MBT™ Versatile+ Appliance System One Case Kits</b>	APC™ II Adhesive Coated Appliance System		APC™ PLUS Adhesive Coated Appliance System	
	<b>.018 in.</b>	<b>.022 in.</b>	<b>.018 in.</b>	<b>.022 in.</b>
U 5 x 5 Clarity™ SL Brackets Hooks L 5 x 5 SmartClip™ SL3 Self-Ligating Brackets Hooks	3 007-103	3 007-113	5 007-103	5 007-113
U 5 x 5 Clarity SL Brackets	3 007-106	3 007-116	5 007-106	5 007-116
U 5 x 5 Clarity SL Brackets Cuspid Hook	3 007-122	3 007-132	5 007-122	5 007-132
U 5 x 5 Clarity SL Brackets Hooks	3 007-107	3 007-117	5 007-107	5 007-117
U 3 x 3 Clarity SL Brackets Cuspid Hook	3 007-123	3 007-133	5 007-123	5 007-133
U/L 3 x 3 Clarity SL Brackets Cuspid Hook	3 007-126	3 007-136	5 007-126	5 007-136
U/L 5 x 5 Clarity SL Brackets Cuspid Hook	3 007-100	3 007-110	5 007-100	5 007-110

**3** Use this prefix to order APC™ II Adhesive Coated Appliance System.

**5** Use this prefix to order APC™ PLUS Adhesive Coated Appliance System with color change adhesive.

<b>Roth* Prescription One Case Kits</b>	APC™ II Adhesive Coated Appliance System		APC™ PLUS Adhesive Coated Appliance System	
	<b>.018 in.</b>	<b>.022 in.</b>	<b>.018 in.</b>	<b>.022 in.</b>
U 5 x 5 Clarity™ SL Brackets Hooks L 5 x 5 SmartClip™ SL3 Self-Ligating Brackets Hooks	3 007-121	3 007-131	5 007-121	5 007-131
U 5 x 5 Clarity SL Brackets Only Cuspid Hook	3 007-124	3 007-134	5 007-124	5 007-134
U 5 x 5 Clarity SL Brackets Only Hooks	3 007-120	3 007-130	5 007-120	5 007-130
U 3 x 3 Clarity SL Brackets Only Cuspid Hook	3 007-125	3 007-135	5 007-125	5 007-135

**3** Use this prefix to order APC™ II Adhesive Coated Appliance System.

**5** Use this prefix to order APC™ PLUS Adhesive Coated Appliance System with color change adhesive.

<b>Ricketts* Prescription One Case Kits</b>	APC™ II Adhesive Coated Appliance System		APC™ PLUS Adhesive Coated Appliance System	
	<b>.018 in.</b>	<b>.022 in.</b>	<b>.018 in.</b>	<b>.022 in.</b>
U 5 x 5 Clarity™ SL Brackets Hooks L 5 x 5 SmartClip™ SL3 Self-Ligating Brackets Hooks	3 007-140	3 007-150	5 007-140	5 007-150
U 5 x 5 Clarity SL Brackets Only Hooks	3 007-141	3 007-151	5 007-141	5 007-151
U 3 x 3 Clarity SL Brackets Only Cuspid Hook	3 007-142	3 007-152	5 007-142	5 007-152

**3** Use this prefix to order APC™ II Adhesive Coated Appliance System.

**5** Use this prefix to order APC™ PLUS Adhesive Coated Appliance System with color change adhesive.



Note	
APC™ System brackets sold in units of five.	APC™ System molar appliances sold in units of four.
Kits on this page are not available uncoated.	*3M Unitek version of this prescription. No endorsement by the doctor is implied.

# Self-Ligating Appliances

## Self-Ligating Bracket Hand Instruments



### SmartClip™ Appliance Wire Disengagement Hand Instrument

Archwires are removed from Clarity™ SL Brackets or SmartClip™ Brackets by sliding the instrument's hooks beneath the archwire and lifting it away from the bracket with a squeeze.

804-160

804-161 Slide Reorder Pack 5/pk

804-162 Hook Insert Replacement with Allen Wrench and set of screws



### SmartClip™ Appliance Wire Insertion Hand Instrument

Using the single tip on one end or the double tip on the other end, archwires are engaged into Clarity™ SL Brackets or SmartClip™ Brackets with a roll of the hand.

804-152 .022 Bracket Instrument

804-153 .018 Bracket Instrument



### Unitek™ Self-Ligating Bracket Debonding Instrument

Distinguished debonding tool designed for the 3M Unitek Self-Ligating Bracket System: Clarity™ SL Self-Ligating Brackets and SmartClip™ Self-Ligating Brackets. May be used with or without the archwire engaged in the bracket slot.

804-170



### Unitek™ Bracket Placement Instrument

Stainless Steel Reverse Action Tweezer/Instrument designed with Self-Ligating brackets in mind. The downward slope of the forearm improves operator visibility while placing the bracket onto the tooth. The instrument is constructed with a convex reverse end that can be used to seat brackets, the slender tips and concave undercarriage allows easy bracket removal from the APC™ Adhesive blister.

804-171

**C L A R I T Y™ | S L**  
SELF-LIGATING APPLIANCE SYSTEM



**SMARTCLIP™ | S L 3**  
SELF-LIGATING APPLIANCE SYSTEM

# Self-Ligating Appliances

## Archwire Introduction

Many orthodontists state that archwire selection is more important when working with a self-ligating appliance than with a traditional appliance. Of significant importance are the force profiles, dimensional integrity and arch form availability of the archwires.

### Force Profiles

When working in a low friction environment it is important to select archwires that deliver minimal, consistent and predictable force levels. For this reason, 3M Unitek has designed archwires in a variety of materials and sizes to offer a large range of force profiles.

### Dimensional Integrity

In a self-ligating system where ligatures are not actively seating the archwire, dimensional consistency is essential for the archwire to predictably express torquing, rotating and tipping movements. All 3M Unitek square and rectangle archwires are engineered to have precise corner radii that deliver predictable torque control. 3M Unitek archwires are available in a range of dimensions and include Hybrid and Dimpled options.

### Arch Forms

A critical part of successful treatment is having an archwire that predictably develops the arch form best suited for each patient. 3M Unitek provides three OrthoForm™ Arch Forms – Tapered, Square, and Ovoid – that offer the diversity needed to fit the range of arch forms among orthodontic cases.

3M Unitek also offers a large variety of wire auxiliaries to allow you to best treat your patients.

### Simplified Archwire Sequence For Self-Ligating Appliances

**Note:** There are many variations to this basic sequence that can be used. Archwire sequence should always be modified to best treat each individual case. Hybrid rectangular arches can be substituted depending on torque requirements.

Treatment Phase	.018 Slot	.022 Slot
<b>Initial Phase</b> Getting Organized <ul style="list-style-type: none"> <li>leveling</li> <li>aligning</li> </ul> Necessary Wire Criteria <ul style="list-style-type: none"> <li>low forces</li> <li>low modulus</li> <li>low friction</li> </ul>	<b>Nitinol Classic</b> .012  <b>Nitinol SE or HA</b> .014	<b>Nitinol Classic</b> .012  <b>Nitinol SE or HA</b> .014  <b>Nitinol HA</b> .016
<b>Intermediate Phase</b> Working the Big Picture <ul style="list-style-type: none"> <li>arch form correction</li> <li>occlusal plane leveling</li> <li>rotating</li> <li>tipping</li> </ul> Necessary Wire Criteria <ul style="list-style-type: none"> <li>medium forces</li> <li>medium working range</li> <li>medium modulus</li> <li>medium malleability</li> <li>low friction</li> </ul>	<b>Nitinol SE or HA</b> .014 with <b>Nitinol SE</b> .014 tandem  <b>Nitinol SE or HA</b> .018  <b>Nitinol HA</b> .016 x .025	<b>Nitinol SE or HA</b> .014 with <b>Nitinol SE</b> .014 or .016 tandem  <b>Nitinol SE or HA</b> .020  <b>Nitinol HA</b> .016 x .025
<b>Finishing Phase</b> Getting Down to Details <ul style="list-style-type: none"> <li>vertical detailing</li> <li>space closure</li> <li>refine interdigitation</li> <li>retention</li> </ul> Necessary Wire Criteria <ul style="list-style-type: none"> <li>medium forces</li> <li>short working range</li> <li>high modulus</li> <li>high malleability</li> </ul>	<b>Beta III Titanium (non-extraction)</b> .016 x .025 .017 x .025  <b>Permachrome Resilient (extraction)</b> .016 x .025 .017 x .025  <b>Braided</b> .017 x .025	<b>Beta III Titanium (non-extraction)</b> .019 x .025  <b>Permachrome Resilient (extraction)</b> .019 x .025  <b>Braided</b> .019 x .025



SMARTCLIP | SL3  
SELF-LIGATING APPLIANCE SYSTEM

# Self-Ligating Appliances

## Archwire

### Tandem Archwires: Filling the Slot

Tandem archwires have shown to produce significant results in correcting rotations and creating leveling and alignment in SmartClip™ SL3 and Clarity™ SL self-ligating appliances.

In order to correct rotations and level and align the teeth early in treatment, the goal is to engage archwires that fill the horizontal plane and have a low unloading force. Using two flexible round archwires in tandem fills both the horizontal and vertical planes of the bracket slot. This configuration corrects and manages rotations while simultaneously correcting vertical discrepancies.



The tandem archwire should be inserted directly on top of the initial archwire used in treatment. There is no need to disengage the initial archwire, saving valuable chair time.

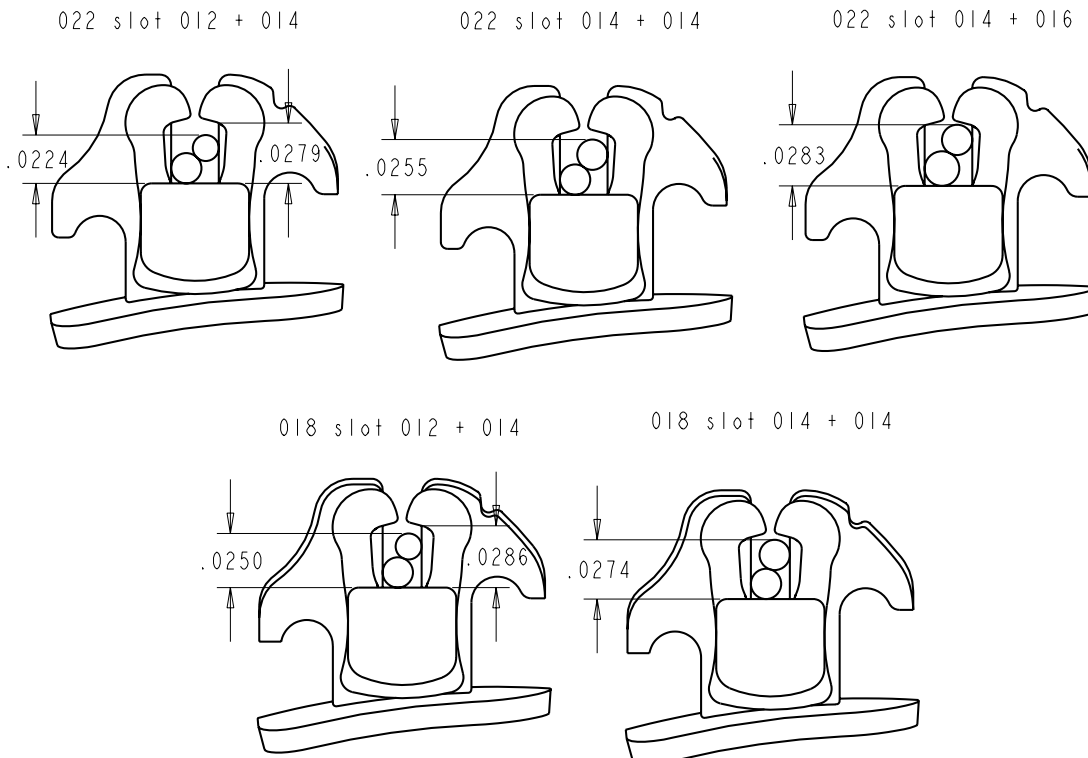
Tandem Archwire Combinations

Slot	Initial Archwire	Tandem Archwire
.018/.022	.012	.014
.018/.022	.014	.014
.022	.014	.016

The choice of tandem archwire combination depends on the slot size and degree of rotational deflection. In most cases, the .018 slot option will be the .014/.014 and the .022 slot will be the .014/.016 combination.

### SmartClip™ Appliance Lower Anterior

SCALE 20.000



# Self-Ligating Appliances

## Unitek™ Nitinol Heat-Activated Archwire



Dimension Inches	Dimension mm	OrthoForm™ I Tapered	OrthoForm™ II Square	OrthoForm™ III Ovoid
<b>Round</b>				
<b>Upper</b>				
.014	0.36	9296-607	9296-609	9296-611
.016	0.41	4293-701	4296-985 <b>6</b>	4296-991 <b>6</b>
.018	0.46	4293-703	4296-987 <b>6</b>	4296-993 <b>6</b>
.020	0.51	-	-	4296-995
.0215	0.55	9296-613	9296-615	9296-617
<b>Lower</b>				
.014	0.36	9296-608	9296-610	9296-612
.016	0.41	4293-702	4296-986 <b>6</b>	4296-992 <b>6</b>
.018	0.46	4293-704	4296-988 <b>6</b>	4296-994 <b>6</b>
.020	0.51	-	-	4296-996
.0215	0.55	9296-614	9296-616	9296-618
<b>Rectangular/Square</b>				
<b>Upper</b>				
.014 x .025	0.36 x 0.64	9296-631	9296-633	9296-635
.016 x .025	0.41 x 0.64	9296-619	9296-621	9296-623
.0175 x .0175	0.44 x 0.44	4293-709	4297-975 <b>6</b>	4297-911 <b>6</b>
.017 x .025	0.43 x 0.64	4293-711	4297-991 <b>6</b>	4297-921 <b>6</b>
.017 x .025 H*	0.43 x 0.64	9296-625	9296-627	9296-629
.019 x .025	0.53 x 0.64	4293-713	4297-977 <b>6</b>	4297-919 <b>6</b>
.019 x .025 H*	0.48 x 0.64	9296-643	9296-645	9296-647
.021 x .025 H*	0.53 x 0.64	9296-637	9296-639	9296-641
<b>Lower</b>				
.014 x .025	0.36 x 0.64	9296-632	9296-634	9296-636
.016 x .025	0.41 x 0.64	9296-620	9296-622	9296-624
.0175 x .0175	0.44 x 0.44	4293-710	4297-976 <b>6</b>	4297-912 <b>6</b>
.017 x .025	0.43 x 0.64	4293-712	4297-992 <b>6</b>	4297-922 <b>6</b>
.017 x .025 H*	0.43 x 0.64	9296-626	9296-628	9296-630
.019 x .025	0.48 x 0.64	4293-714	4297-978 <b>6</b>	4297-920 <b>6</b>
.019 x .025 H*	0.48 x 0.64	9296-644	9296-646	9296-648
.021 x .025 H*	0.53 x 0.64	9296-638	9296-640	9296-642

\* Hybrid

Gold

Gold

Nitinol Heat-Activated is a thermally activated super-elastic archwire. It is the easiest of Nitinol wires to engage, and it delivers light continuous forces that effectively move teeth with minimal discomfort to the patient.

- Can be cooled or chilled resulting in a softer, more pliable wire for easy engagement
- Provides light continuous forces
- Force activation occurs around body temperature
- Available in square sizes making it excellent for early torque control
- Good bend retention when bent in hot water
- 10/pk unit of use



# Self-Ligating Appliances

## Unitek™ Nitinol Super-Elastic Archwire



Dimension Inches	Dimension mm	OrthoForm™ I Tapered	OrthoForm™ II Square	OrthoForm™ III Ovoid
<b>Round</b>				
<b>Upper</b>				
.014	0.36	4293-601	4296-805	6 4296-911
.014 D**	0.36	9293-601	9296-805	9296-911
.016	0.41	4293-603	4296-807	6 4296-913
.016 D**	0.41	9293-603	9296-807	9296-913
.018	0.46	-	4296-809	6 4296-915
.020	0.51	-	4296-811	4296-917
<b>Lower</b>				
.014	0.36	-	4296-806	6 4296-912
.014 D**	0.36	9293-602	9296-806	9296-912
.016	0.41	4293-604	4296-808	6 4296-914
.016 D**	0.41	9293-604	9296-808	9296-914
.018	0.46	-	4296-810	6 4296-916
.020	0.51	-	4296-812	4296-918
<b>Rectangular/Square</b>				
<b>Upper</b>				
.014 x .025 D**	0.36 x 0.64	9293-813	9293-815	9293-817
.016 x .016	0.41 x 0.41	-	4297-803	6 4297-951
.016 x .025 D**	0.41 x 0.64	9293-849	9293-851	9293-853
.017 x .025	0.43 x 0.64	-	4297-807	6 4297-955
.017 x .025 D**	0.43 x 0.64	9293-613	9297-807	9297-955
.017 x .025 H* D**	0.43 x 0.64	9293-877	9293-879	9293-881
.018 x .018	0.46 x 0.46	4293-615	4297-809	4297-957
.018 x .025	0.46 x 0.64	-	4297-813	6 4297-959
.018 x .025 H*	0.46 x 0.64	9293-903	9293-905	9293-907
.019 x .025	0.48 x 0.64	4293-619	4297-815	6 4297-961
.019 x .025 H*	0.46 x 0.64	9296-649	9296-651	9296-653
.021 x .025 H*	0.53 x 0.64	9293-931	9293-933	9293-935
<b>Lower</b>				
.014 x .025 D**	0.36 x 0.64	9293-814	9293-816	9293-818
.016 x .016	0.41 x 0.41	-	4297-804	6 4297-952
.016 x .025 D**	0.41 x 0.64	9293-850	9293-852	9293-854
.017 x .025	0.43 x 0.64	-	4297-808	6 4297-956
.017 x .025 D**	0.43 x 0.64	9293-614	9297-808	9297-956
.017 x .025 H* D**	0.43 x 0.64	9293-878	9293-880	9293-882
.018 x .018	0.46 x 0.46	4293-616	4297-810	4297-958
.018 x .025	0.46 x 0.64	-	4297-814	6 4297-960
.018 x .025 H*	0.46 x 0.64	9293-904	9293-906	9293-908
.019 x .025	0.48 x 0.64	4293-620	4297-816	6 4297-962
.019 x .025 H*	0.48 x 0.64	9296-650	9296-652	9296-654
.021 x .025 H*	0.53 x 0.64	9293-932	9293-934	9293-936

\* Hybrid \*\* Dimpled

Gold

Nitinol Super-Elastic is easy to engage and maintains light continuous forces with a range between Nitinol Heat-Activated and Nitinol Classic.

- Provides light continuous forces
- Easy engagement characteristics
- Good early torque control
- 10/pk unit of use



# Self-Ligating Appliances

## Unitek™ Nitinol Classic Archwire



Dimension Inches	Dimension mm	OrthoForm™ I Tapered	OrthoForm™ II Square	OrthoForm™ III Ovoid
<b>Round</b>				
<b>Upper</b>				
.012	0.30	9296-601	9296-603	9296-605
.014	0.36	4293-510	4296-405	4296-517
.014 D**	0.36	9293-510	9296-405	9296-517
.016	0.41	4293-512	4296-407	4296-519
.016 D**	0.41	9293-512	9296-407	9296-519
.018	0.46	4293-514	4296-409	4296-521
.020	0.51	4293-516	4296-411	4296-523
<b>Lower</b>				
.012	0.30	9296-602	9296-604	9296-606
.014	0.36	4293-511	4296-406	4296-518
.014 D**	0.36	9293-511	9296-406	9296-518
.016	0.41	4293-513	4296-408	4296-520
.016 D**	0.41	9293-513	9296-408	9296-520
.018	0.46	4293-515	4296-410	4296-522
.020	0.51	4293-517	4296-412	4296-524
<b>Rectangular/Square</b>				
<b>Upper</b>				
.014 x .025 D**	0.36 x 0.64	9293-819	9293-821	9293-823
.016 x .016	0.41 x 0.41	4293-518	4297-701	4297-851
.016 x .025 D**	0.41 x 0.64	9293-855	9293-857	9293-859
.017 x .025	0.43 x 0.64	4293-524	4297-707	4297-857
.017 x .025 D**	0.43 x 0.64	9293-524	9297-707	9297-857
.017 x .025 H* D**	0.43 x 0.64	9293-883	9293-885	9293-887
.018 x .018	0.46 x 0.46	4293-526	4297-709	4297-859
.018 x .025	0.46 x 0.64	4293-530	4297-713	4297-863
.018 x .025 H*	0.46 x 0.64	9293-909	9293-911	9293-913
.019 x .025	0.48 x 0.64	4293-532	4297-715	4297-865
.019 x .025 H*	0.48 x 0.64	9293-951	9293-953	9293-955
<b>Lower</b>				
.014 x .025 D**	0.36 x 0.64	9293-820	9293-822	9293-824
.016 x .016	0.41 x 0.41	4293-519	4297-702	4297-852
.016 x .025 D**	0.41 x 0.64	9293-856	9293-858	9293-860
.017 x .025 D**	0.43 x 0.64	4293-525	4297-708	4297-858
.017 x .025 D**	0.43 x 0.64	9293-525	9297-708	9297-858
.017 x .025 H* D**	0.43 x 0.64	9293-884	9293-886	9293-888
.018 x .018	0.46 x 0.46	4293-527	4297-710	4297-860
.018 x .025	0.46 x 0.64	4293-531	4297-714	4297-864
.018 x .025 H*	0.46 x 0.64	9293-910	9293-912	9293-914
.019 x .025	0.48 x 0.64	4293-533	4297-716	4297-866
.019 x .025 H*	0.48 x 0.64	9293-952	9293-954	9293-956

\*Hybrid \*\* Dimpled

3M Unitek pioneered nickel-titanium as an improved alternative to stainless steel in 1977. This "Classic" archwire continues to provide the linear elasticity and bendability of high strength steel and the elastic working range and lighter forces that only a nickel-titanium can deliver. It was the first and continues to be the most versatile.

- Long working range
- 40% the forces of stainless steel
- 10/pk unit of use



# Self-Ligating Appliances

## Unitek™ Beta III Titanium Archwire



Dimension Inches	Dimension mm	OrthoForm™ I Tapered	OrthoForm™ II Square	OrthoForm™ III Ovoid
<b>Rectangular/Square</b>				
<b>Upper</b>				
.016 x .025	0.41 x 0.64	4301-350	4301-352	4301-354
.0175 x .0175	0.44 x 0.44	-	4301-336	4301-338
.017 x .025	0.43 x 0.64	4301-326	4301-308	4301-310
.019 x .025	0.48 x 0.64	4301-328	4301-314	4301-316
<b>Lower</b>				
.016 x .025	0.41 x 0.64	4301-351	4301-353	4301-355
.0175 x .0175	0.44 x 0.44	-	4301-337	4301-339
.017 x .025	0.43 x 0.64	4301-327	4301-309	4301-311
.019 x .025	0.48 x 0.64	4301-329	4301-315	4301-317

Known as the “happy medium” between nickel-titanium and stainless steel, this archwire provides the extended working range of a titanium alloy and the bendability of stainless steel.

- Processed to reduce breakage
- Polished surface finish for improved sliding mechanics
- Tight corner radii specifications reducing torque loss, especially in final phase of treatment
- 10/pk unit of use



# Self-Ligating Appliances

## Permachrome Resilient Archwire



Dimension Inches	Dimension mm	OrthoForm™ I Tapered	OrthoForm™ II Square	OrthoForm™ III Ovoid
<b>Round</b>				
<b>Upper</b>				
.012	0.30	-	4 300-603	300-003
.014	0.36	4 293-305	4 300-605 6	4 300-005
.016	0.41	4 293-307	4 300-607 6	4 300-007
.018	0.46	4 293-309	4 300-609 6	4 300-009
.020	0.51	4 293-311	4 300-611 6	4 300-011
<b>Lower</b>				
.012	0.30	-	4 300-604	300-004
.014	0.36	4 293-306	4 300-606 6	4 300-006
.016	0.41	4 293-308	4 300-608 6	4 300-008
.018	0.46	4 293-310	4 300-610 6	4 300-010
.020	0.51	4 293-312	4 300-612 6	4 300-012
<b>Rectangular/Square</b>				
<b>Upper</b>				
.016 x .016	0.41 x 0.41	4 293-315	4 300-615 6	4 300-015
.016 x .025	0.41 x 0.64	4 300-655	4 300-657	4 300-659
.0175 x .0175	0.44 x 0.44	293-331	4 293-341	4 293-351
.017 x .025	0.43 x 0.64	4 293-321	4 300-621 6	4 300-021
.017 x .025 H*	0.43 x 0.64	9293-889	9293-891	9293-893
.018 x .025	0.46 x 0.64	4 293-325	4 300-625 6	4 300-025
.018 x .025 H*	0.46 x 0.64	9293-915	9293-917	9293-919
.019 x .025	0.48 x 0.64	4 293-327	4 300-627 6	4 300-027
.019 x .025 H*	0.48 x 0.64	9293-957	9293-959	9293-961
.021 x .025 H*	0.53 x 0.64	9293-943	9293-945	9293-947
<b>Lower</b>				
.016 x .016	0.41 x 0.41	293-316	4 300-616 6	4 300-016
.016 x .025	0.41 x 0.64	4 300-656	4 300-658	4 300-660
.0175 x .0175	0.44 x 0.44	-	-	4 293-352
.017 x .022	0.43 x 0.56	-	4 300-620	4 300-020
.017 x .025	0.43 x 0.64	4 293-322	4 300-622 6	4 300-022
.017 x .025 H*	0.43 x 0.64	9293-890	9293-892	9293-894
.018 x .025	0.46 x 0.64	4 293-326	4 300-626 6	4 300-026
.018 x .025 H*	0.46 x 0.64	9293-916	9293-918	9293-920
.019 x .025	0.48 x 0.64	4 293-328	4 300-628 6	4 300-028
.019 x .025 H*	0.48 x 0.64	9293-958	9293-960	9293-962
.021 x .025 H*	0.53 x 0.64	9293-944	9293-946	9293-948

\* Hybrid

Unit of Use

Unit of Use

Gold

Unit of Use



Our most popular stainless steel archwire – delivering a balance of malleability and springback.

- Better formability than Hi-T™ II
- Mid-range tensile strength
- Gold available in unit of use only 5/pk

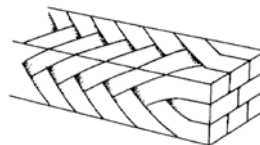
- OrthoForm™ I, II, III, Arch Forms packed 50/pk unit of use or 10/pk folders
- Hybrid and Dimpled packed 10/pk unit of use

# Self-Ligating Appliances

## Multi-Strand Archwire

### Unitek™ Braided Wire

- Eight (8) strand Braided Rectangular
- Three dimensional control
- Wide working range
- 10/pk



Dimension Inches	Dimension mm	OrthoForm™ I Tapered	OrthoForm™ II Square	OrthoForm™ III Ovoid
<b>Rectangular/Square</b>				
<b>Upper</b>				
.017 x .025	0.43 x 0.64	300-965	300-909	300-967
.018 x .025	0.46 x 0.64	-	300-911	-
.019 x .025	0.48 x 0.64	300-969	300-913	300-971
<b>Lower</b>				
.017 x .025	0.43 x 0.64	300-966	300-910	300-968
.018 x .025	0.46 x 0.64	-	300-912	-
.019 x .025	0.48 x 0.64	300-970	300-914	300-972

## Archwire Accessories

### Unitek™ Archwire Dispenser

Holds up to six boxes of archwires (archwires not included). White Plexi.  
453-012



### Wood Archwire Rack

Holds up to 16 packs of Unitek™ Preformed Archwires (archwires not included).  
453-004

### Preformed Edgewise Archwire Holder

Parallel, color coded tubes organize seven each upper and lower standard archwires (archwires not included).  
453-001

### Archwire Force and Torque Loss Calculator

Easy-to-use slide chart provides working force levels and torque loss for most 3M Unitek wire sizes and product types.  
012-161

### Light Wire Arch Computer

Flexible vinyl computer used for fast determination of proper archwire size by measuring cuspid-to-cuspid distance on patient's model.  
701-720

Refer to Supplies and Equipment section for arch form symmetry aids.

# Self-Ligating Appliances

## Practice Marketing Materials Resource Center



SMARTCLIP | SL3  
SELF-LIGATING APPLIANCE SYSTEM



### Practice Marketing Materials to attract new patients and differentiate your practice

The Practice Marketing Resource Center on the 3M Unitek web site provides a variety of professionally designed marketing materials you can customize with your practice information. Ads, brochures and other items all feature our worldwide self-ligating consumer message "Get The 3M Braces Advantage" and are available at no cost to 3M™ Self-Ligating Bracket users.

**CLARITY™ | SL**  
SELF-LIGATING APPLIANCE SYSTEM

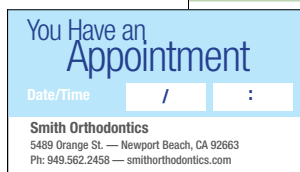
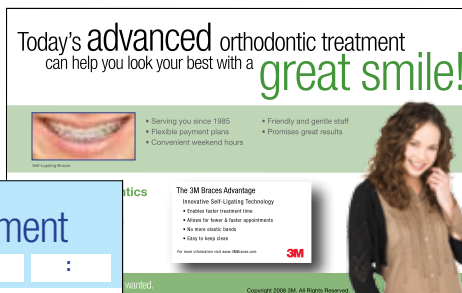


#### Here's How It Works:

1. Go to [www.3MUnitek.com](http://www.3MUnitek.com)
2. Click on Practice Marketing Resource Center, Overview
3. Browse the materials available and print out samples
4. Make edits to the samples and request high resolution files
5. With instructions we provide, you, your graphic artist or printer can download the high resolution files to personalize and create professional looking marketing tools

#### Choose from:

- Advertisements in a variety of sizes
- Patient brochures
- Dentist referral brochures
- Mailer cards
- Appointment cards
- Images for your web site....and more.



Some items are available in Spanish and French versions for practices wanting to reach these audiences.



# Self-Ligating Appliances

## Practice Enhancement Materials



**SMARTCLIP<sup>SL3</sup>**  
SELF-LIGATING APPLIANCE SYSTEM

### SmartClip™ SL3 Self-Ligating Appliance System



REF 014-491 (Poster)  
REF 014-495 (Desktop Display)

#### Office Posters and Desktop Displays

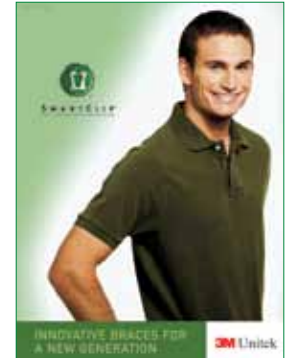
4 SmartClip™ Braces posters available individually in two different sizes. Size: 24" x 36" (Poster) and 8" x 11" (Desktop Display). Large poster delivered rolled in a shipping tube.



REF 014-490  
(Poster)  
REF 014-494  
(Desktop Display)



REF 014-492  
(Poster)  
REF 014-496  
(Desktop Display)



REF 014-493  
(Poster)  
REF 014-497  
(Desktop Display)

**Patient Waiting Room DVD**  
Orthodontic Office Presentation.  
2 minutes  
REF 014-485



**SmartClip™ Braces Lenticular Card**  
Shows wire insertion and disengagement.  
(Note: pk of 25)  
REF 012-160



**SmartClip Bracket Demonstration Aid**  
Show sliding properties of SmartClip brackets versus brackets with ligatures. Holds lenticular cards or business cards.  
REF 600-227



**SmartClip™ SL3 Braces Typodont**  
REF 600-221



**SmartClip Bracket 15x Demonstration Model**  
REF 600-226



**Patient Information Brochures**  
Get The 3M™ Braces Advantage.  
REF 016-938



**Dentist Referral Brochures**  
Your Dentist Has Advised You To See An Orthodontist.  
Available in packages of 25 (5 of each model)  
(Note: pk of 25)  
REF 014-483



**SmartClip Braces Literature Holder**  
REF 014-477  
(Order brochures separately)

# Self-Ligating Appliances

## Practice Enhancement Materials



### SmartClip™ SL3 Self-Ligating Appliance System

**SMARTCLIP<sup>SL3</sup>**  
SELF-LIGATING APPLIANCE SYSTEM



#### SmartClip™ Appliance System Practice Enhancement Kit

- Kit includes: Typodont (1)
- 15x Demonstration Model (1)
- Patient Brochures (25)
- Brochure Holder (1)
- Lenticular Cards (50)
- Referring Dentist Brochures (25)
- Wire/Card Holder (1)
- Office Presentation Mini DVD (1)
- Desktop Easel (1)

REF 5004-997



#### SmartClip Appliance System Accessory Kit

- Kit includes: 7 x 7 Reusable Set Up Trays (3)
- Patient Brochures (25)
- Typodont (1)
- Wire Disengagement Instrument (1)
- .022 Slot Wire Insertion Instrument (1)
- Instructional CD (1)
- Bracket ID Card (1)
- .014 Upper & Lower Nitinol Super-Elastic OrthoForm™ III Dimpled Wire (10 of each)
- .016 x .022 Upper & Lower Nitinol Heat-Activated OrthoForm III Dimpled Wire (10 of each)

REF 5004-998 (without Transbond™ Plus Self Etching Primer)

REF 5004-999 (with Transbond™ Plus Self Etching Primer – 20 unit box)

SmartClip Appliance System Instructional CD  
REF 6600-820



7 x 7 Reusable Set Up Tray  
REF 2600-005

# Self-Ligating Appliances

## Practice Enhancement Materials

### Clarity™ SL Self-Ligating Appliance System



REF 014-505 (Poster)  
REF 014-500 (Desktop Display)

#### Office Posters and Desktop Displays

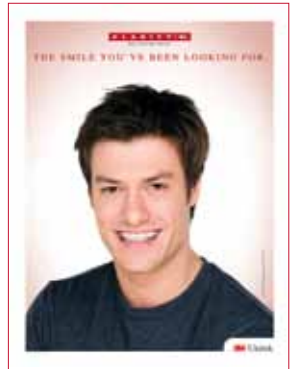
4 Clarity™ SL Braces posters available individually in two different sizes. Size: 24" x 36" (Poster) and 8 ½" x 11" (Desktop Display). Large poster delivered rolled in a shipping tube.



REF 014-504  
(Poster)  
REF 014-499  
(Desktop Display)



REF 014-506  
(Poster)  
REF 014-501  
(Desktop Display)



REF 014-507  
(Poster)  
REF 014-502  
(Desktop Display)



**Clarity™ SL Braces Practice Enhancement Kit**  
Kit includes: Consultation Model (1)  
15x Demonstration Model (1)  
Desktop Display Posters (4)  
Patient Brochures (25)  
Patient Brochure Holder (1)  
Lenticular Cards (25)  
REF 5007-997



**Chairside Starter Kit**  
Kit includes: Debonding Instrument (1)  
Wire Disengagement Instrument (1)  
Wire Insertion Instrument (1)  
.014 Upper & Lower Nitinol Super-Elastic OrthoForm™ III Dimpled Wire (10 of each)  
REF 5007-998 (.018 slot)  
REF 5007-999 (.022 slot)



**Clarity SL Braces Typodont**  
Clarity SL Braces  
Upper & Lower  
REF 600-235



**Clarity SL Braces Typodont**  
Clarity SL Braces Upper  
& SmartClip™ SL3 Braces Lower  
REF 600-229



**Clarity SL Bracket**  
15x Demonstration Model  
REF 600-230



**Clarity SL Braces Lenticular Card**  
Compare Clarity SL Braces to Metal  
(Note: pk of 25)  
REF 012-178



**Clarity SL Braces Patient Brochure**  
The Smile Says It All  
REF 014-498

**Clear Holders**  
Holds many of the  
patient brochures  
REF 453-014

(Order brochures separately)



**Clarity SL Braces Patient Brochure**  
The alternative  
to stained ligatures  
REF 014-525